

Still Hopes

Columbia, South Carolina



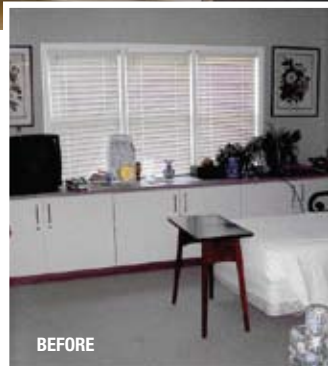
©2011 Lowry/McKee Photography

Interior Design: GMK Interiors; **Contractor:** GMK Associates; **Flooring:** Toli; **Lighting:** Progress Lighting; **Paint:** Benjamin Moore, Rose Talbert, Sherwin-Williams; **Solid Surface:** LG; **Wall Base:** Johnsonite

Occupancy in the Rosalie Bomar Assisted Living Dementia Unit at Still Hopes Retirement Community was quickly sliding downhill despite high marketing traffic. The unit's more traditional community areas and resident rooms, offering minimal storage and space, needed modernization. Prospective residents and their families sought comfort, convenience, and an environment where they could age in style—part of a new resident population whose expectation is high-end comfort, convenience, and the latest in technology. Knowing design, which addresses this new culture and its inherent lifestyle trends head on, will own the future in terms of viability and potential profitability.

GMK Interiors worked with Still Hopes on extensive renovations to 24 resident rooms and its public healthcare areas. The design team created custom storage spaces, along with new finishes and fixtures for each resident room, as well as renovated bathing spaces. Working to “open up each room” and create more usable space, the designers reprogrammed existing areas and added fresh design materials. The result: personal, residential rooms easier to navigate and more accommodating from a storage standpoint.

The traditional healthcare unit was transformed into a residential-inspired space offering comfort, activity and, above all, choices that meet the residents' needs and exceed their expect-



tations. The renovation proved a huge success, most readily seen through a 33 percent increase in occupancy.

Jury comments

- *This is the most storage (and nice looking storage) I've ever seen in a resident room.*
- *Nice flooring change, good storage.*

Reader comments

- *Great use of storage space.*
- *More inviting.*

The R.H. Myers Apartments

Beachwood, Ohio

The administrator and staff at The R.H. Myers Apartments noticed trends were beginning to change in 2007 with increases in applications from couples and singles desiring larger apartments. Conversely, demand for the site's standard 517-square-foot apartments was waning. In an existing high-rise building, 30 sets of adjoining small one-bedroom apartments were converted to 16 two-bed, two-bath, 1,050-square-foot apartments with ample living and kitchen space.

A committee made up of staff, board members, tenants, families and the site's architect was involved in the process—from suite design and material selection to the relocation and construction impact on each tenant. The committee surmised relocation would be the biggest challenge when making way for construction. However, those fears quickly dissipated with the first few moves. With proper planning, it became a seamless operation. Families took their loved ones out for the day. When they returned, all of their belongings were removed from the old apartment and placed in an existing unoccupied new apartment, just as

they had left them.

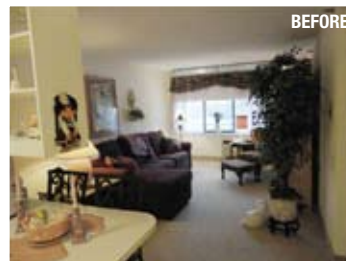
Staff streamlined utility billings, address changes, and other notifications. With walls being torn down and rebuilt, noise had to be controlled. On a daily basis, staff would inform tenants in and around the most affected areas of the routine for the day. The construction crew was kept to a tight schedule that everyone had agreed to from the start. By monitoring trends and adjusting to the site's changing population, The R.H. Myers Apartments has been able to effectively meet the needs of the community.

Jury comments

- *Nice conversion of small one bedrooms into more spacious two bedrooms. Opened up the space nicely.*
- *Larger units, open kitchen, accessible sink.*

Reader comments

- *Interesting open floor plan.*
- *Beautiful transformation! Love the kitchen!*
- *Best project I have ever seen!! I very much like the kitchen, dinette, and living room areas. Particularly appreciate the kitchen area.*
- *Beautiful. It now looks like a richly appointed condominium. Love the large kitchen...much safer looking and accessible than the old one.*



Architect: Herman Gibans Fodor, Inc. – Architects; **Appliances:** Amana, Frigidaire, General Electric, Bloom Brothers Supply; **Bath Countertop:** AMI, Wolff Brothers Supply Inc.; **Bath Tile:** Crossville Color Blox, Virginia Tile; **Cabinetry:** Kraftline by Kraftmaid, Marquis by Cardell, Babin Building Solutions; **Carpet:** Mohawk, Marche Mohawk Industries; **Door Locks:** Sargent, Cleveland Vicon Company; **Grab Bars:** Moen, Active Plumbing Supply; **HVAC-PTAC Units:** Amana, Goodman Company; **Kitchen Countertop:** Meganite, Cleveland Plywood; **Kitchen Tile:** Dal Tile Passagio, Dal Tile Corp.; **Paint:** Sherwin-Williams; **Plumbing:** Badger's, Delta, Gerber, LK PSR-22193, Swanstone, Taylor Plumbing Contractors